

REVISIONS	DATE	BY	BT
① Per City Comments	1/9/03		
Lower Slope 0.25 feet Per Client	1/9/03		

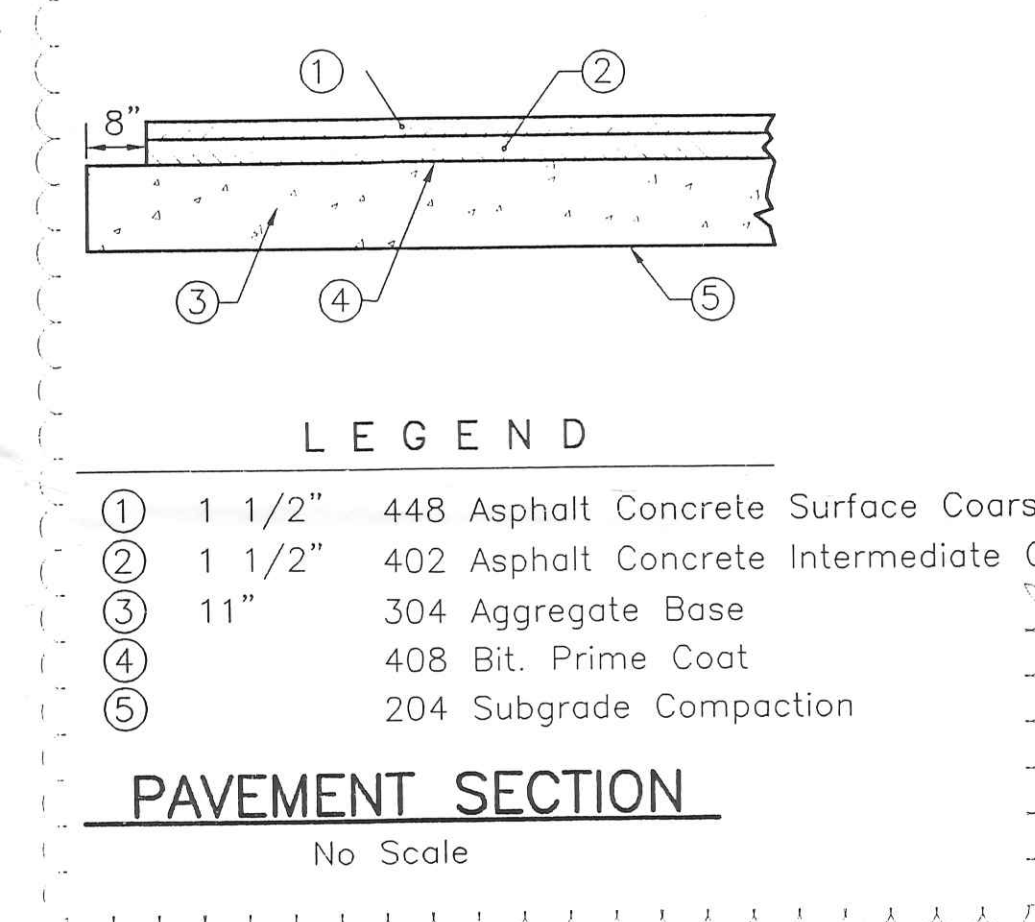
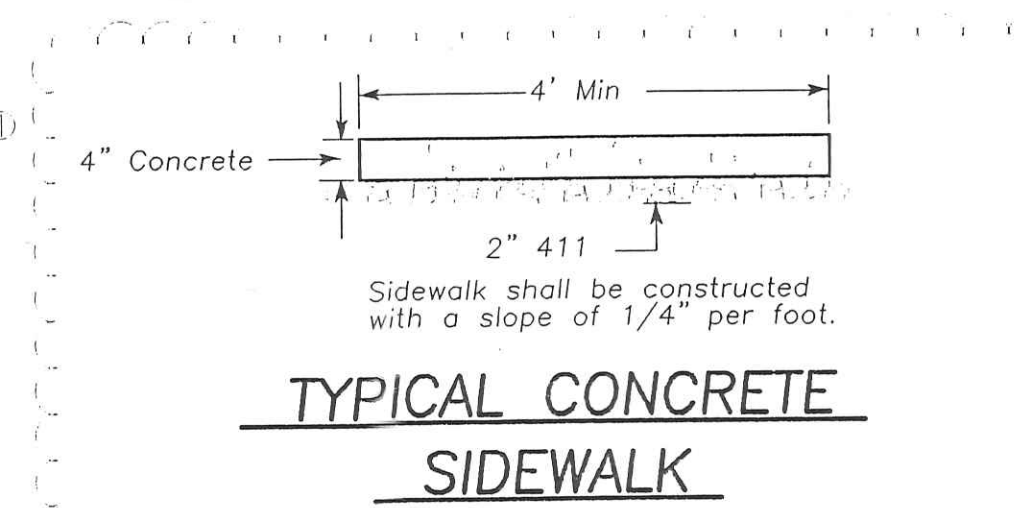
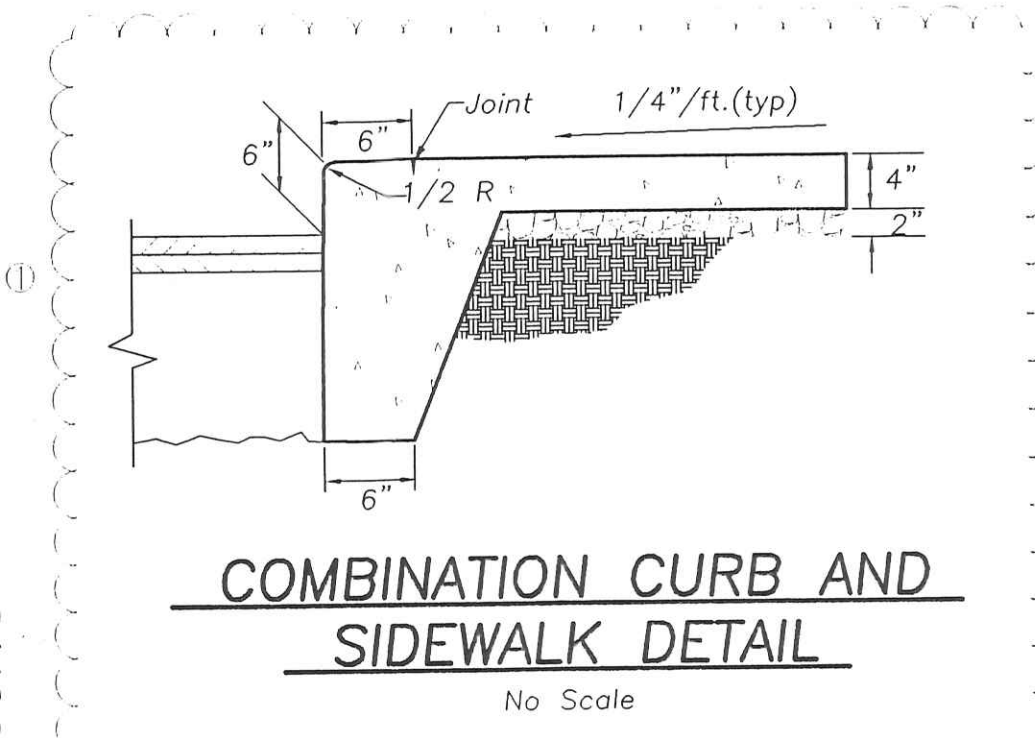
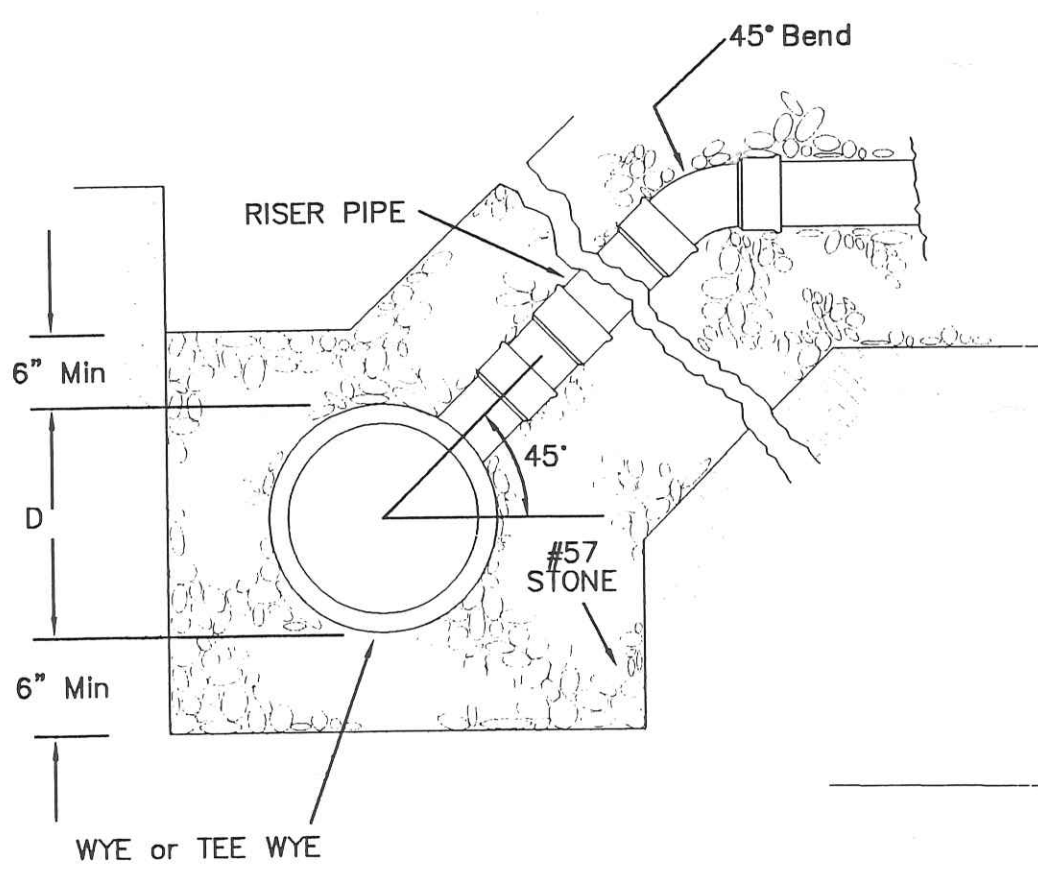
DATE	12/10/02
DWG BY	BAT
PROJECT NO.	02-1444
SHEET NO.	SP1

Existing 0000
 10' 00" 00"
 10' 00" 00"
 10' 00" 00"

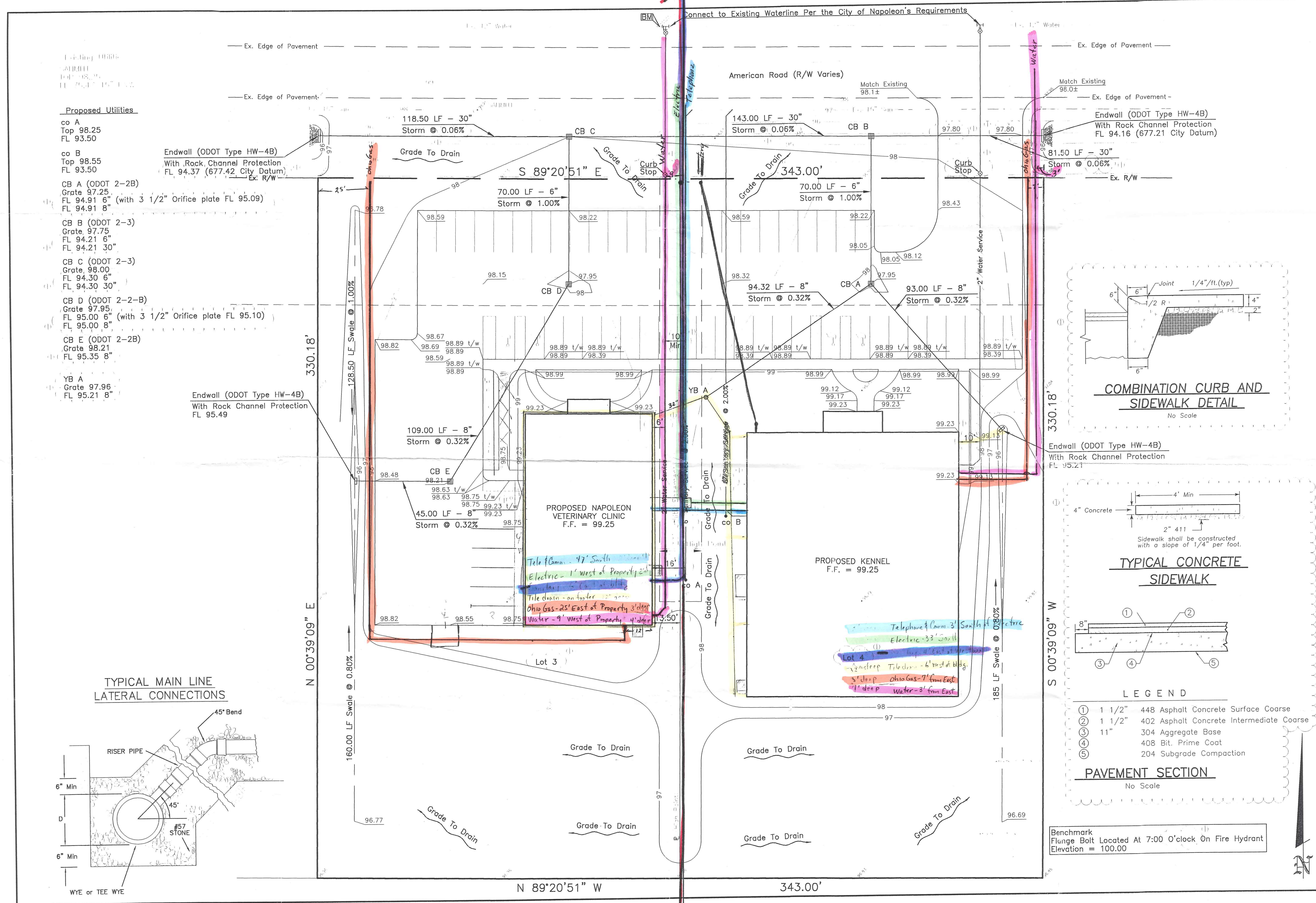
Proposed Utilities

- co A
Top 98.25
FL 93.50
- co B
Top 98.55
FL 93.50
- CB A (ODOT 2-2B)
Grate 97.25
FL 94.91 6" (with 3 1/2" Orifice plate FL 95.09)
FL 94.91 8"
- CB B (ODOT 2-3)
Grate 97.75
FL 94.21 6"
FL 94.21 30"
- CB C (ODOT 2-3)
Grate 98.00
FL 94.30 6"
FL 94.30 30"
- CB D (ODOT 2-2-B)
Grate 97.95
FL 95.00 6" (with 3 1/2" Orifice plate FL 95.10)
FL 95.00 8"
- CB E (ODOT 2-2B)
Grate 98.21
FL 95.35 8"
- YB A
Grate 97.96
FL 95.21 8"

TYPICAL MAIN LINE LATERAL CONNECTIONS



Benchmark
 Flange Bolt Located At 7:00 O'clock On Fire Hydrant
 Elevation = 100.00



655 American Rd Utilities Layout